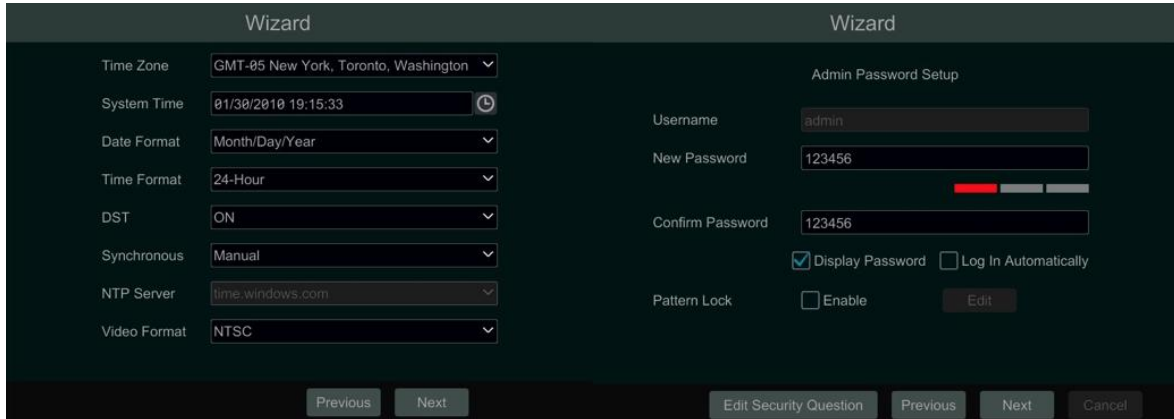


## NVR Quick set up guide

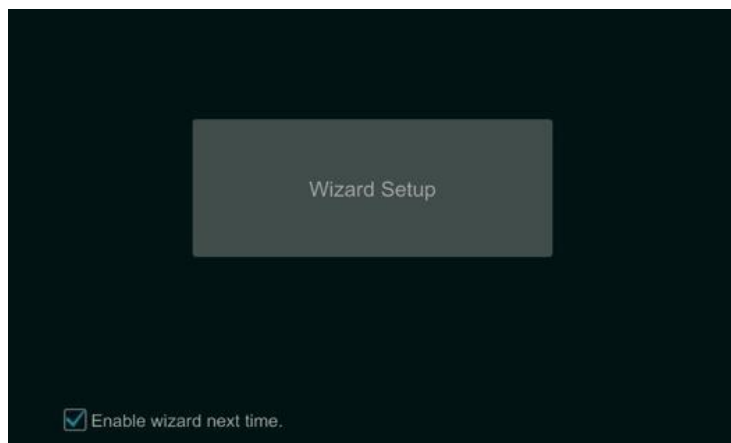
On supplying you with your new NVR, we have already put in the default settings to get you recording as soon as possible, please refer to this guide if you have factory reset the machine and would like to get back up as soon as possible.

Firstly, connect the NVR to the power and connect it also the mouse, monitor and to your router and switch on. The NVR will go through its start up checks and initialise for a fresh start.

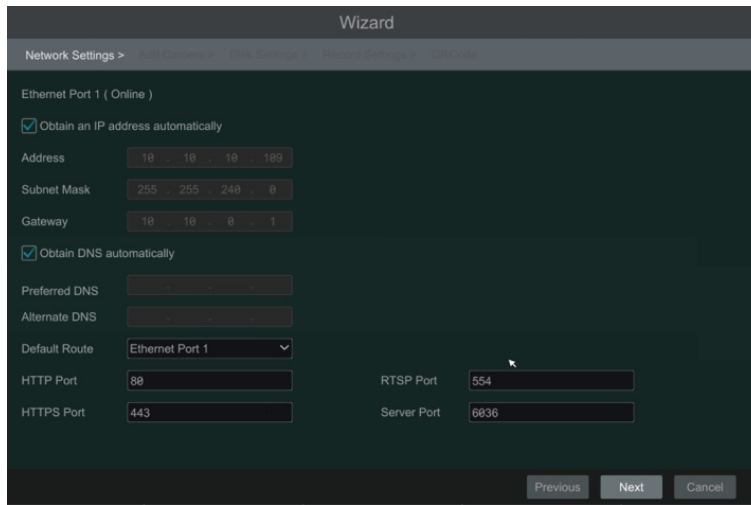


The screenshot shows the 'Wizard' setup interface. On the left, under the 'Wizard' header, there are several configuration options: Time Zone (GMT-05 New York, Toronto, Washington), System Time (01/30/2010 19:15:33), Date Format (Month/Day/Year), Time Format (24-Hour), DST (ON), Synchronous (Manual), NTP Server (time.windows.com), and Video Format (NTSC). On the right, under the 'Wizard' header, is the 'Admin Password Setup' section. It includes fields for Username (admin), New Password (123456), and Confirm Password (123456). There are checkboxes for 'Display Password' (checked) and 'Log In Automatically' (unchecked). A 'Pattern Lock' section has an 'Enable' checkbox (unchecked) and an 'Edit' button. At the bottom, there are navigation buttons: 'Previous', 'Next', 'Edit Security Question', 'Previous', 'Next', and 'Cancel'.

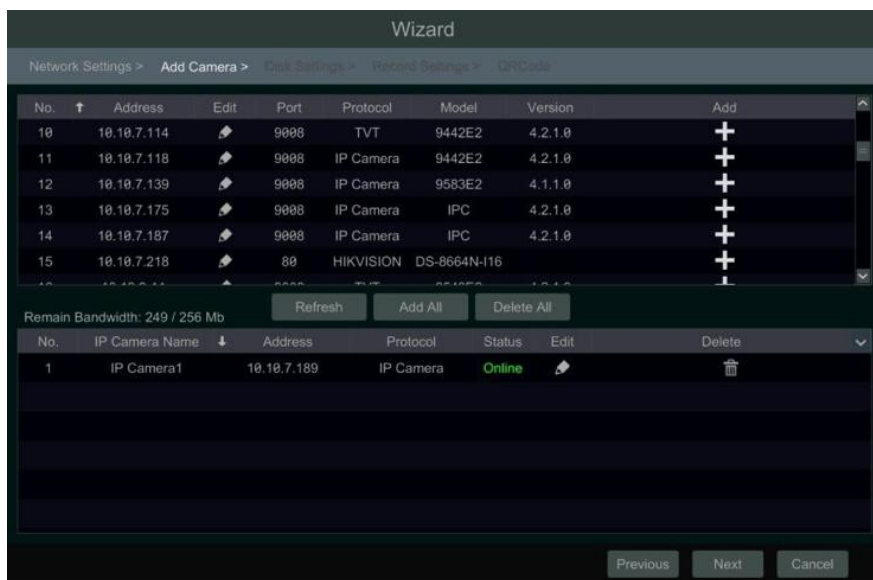
The first start will then lead you through some initial basic settings such as language, privacy statement and date/time. You will also be able to put in a new password, which I would always recommend, as well as a password recovery question and answer for if you misplace your password.



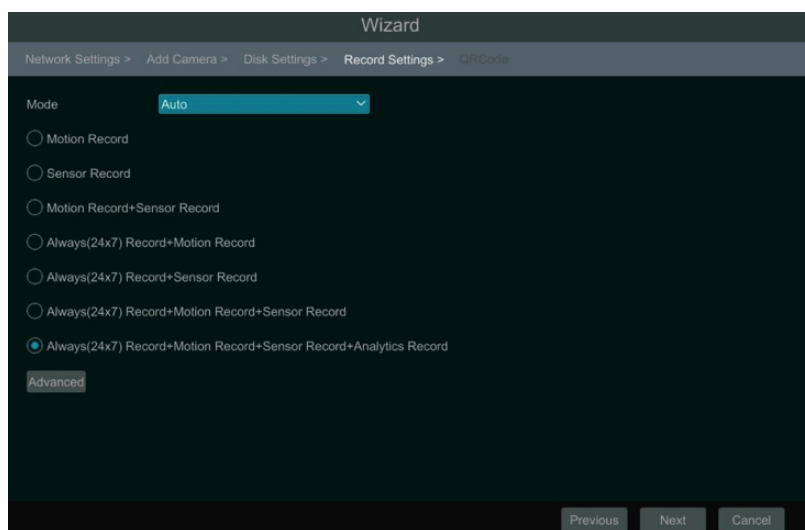
When the Wizard starts proper it will take you through the network setup, you can change the port numbers here if you would like, the important ones are HTTP and server port and this just moves them away from standard access ports for little extra security, and 2-5 digit number will be fine just not them down as they may be required later. Click next to continue.

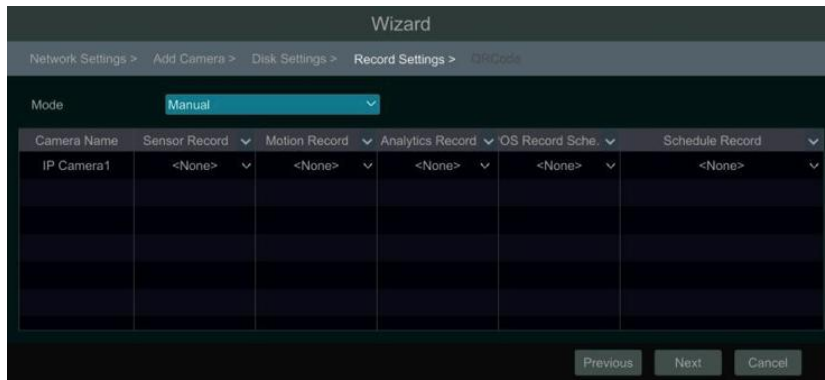


Next will be for adding cameras, the NVR will scan your network and pick up any IP cameras you have plugged into your network and that are powered on. It will give you a break down of the cameras, their IP address the network port numbers, models and firmware versions and there will be an "Add" column, clicking on the plus symbols will add the cameras to your NVR. Click next to continue.



On the next page we have the record settings, they can be left to auto and this will record everything 24 hours a day or you can choose customisation which allows you to pick and choose which cameras record motion, AI or schedule and for how long (24/7 for example).





Next up is the NAT and QR code this needs to be enabled for access on your phone and the QR code can be scanned on the SuperLive Plus phone app for phone access, but this can be done later when setting up remote access fully, so you can just click next to continue.

Lastly the Cloud upgrade feature can be turned on at this point but I would also leave this until setting up the remote access has been established, click OK to finish the wizard.