
CCTV42 System2 DVR Quick Start Guide 4/8/16-Ch DVR

If you have purchased a DVR / Hard drive package from us then we will have already installed the hard drive(s) and configured the basic settings on your DVR recorder. You can fast forward to section 4 in this guide.

1. Installing a Hard Drive

1.1 Install Hard Drive

Our 4 & 8 camera DVR recorders take a single hard drive up to 2TB, our 16 camera DVR recorder takes 2 hard drives up to 2TB each. It is important to use the correct type of AV grade drive. A standard computer hard drive is not suitable.

The specific capacity of each hard drive in terms of recording time will be dependent on which recording settings are used. Please see Appendix B to work out how many days recording time will be possible.

Step1: Unscrew and Open the top cover

Step2: Connect the power and data cables. Place the HDD onto the bottom case as below.



Fig 1.1 Connect HDD

Step3: Screw the HDD as below.

Note: It is easier to install the hard drive if you connect the power and data cables first then screw the hard drive to the base.



Fig 1.2 Screw HDD

2. Connections

2.1 Rear view for 4-ch DVR

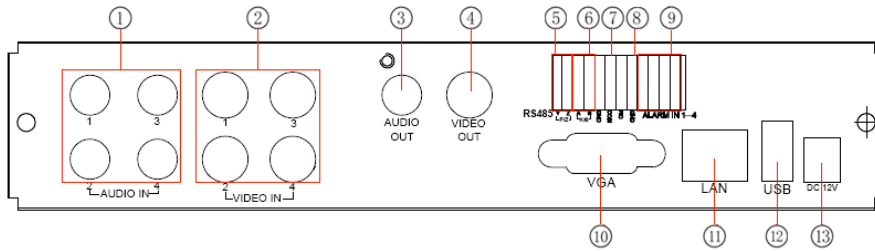


Fig 2.1 Rear view for 4-ch DVR

1	4 Ch Audio input (RCA/Phono)	2	Video input channels from 1-4 (BNC)
3	Audio output, connect to monitor or external amplifier (RCA/Phono)	4	Connect to monitor (BNC)
5	Connect to speed dome/PTZ	6	Connect to keyboard
7	1-ch relay output. Connect to external alarm	8	+5 V and Ground
9	Connect to external sensor1-4	10	VGA output, connect to monitor
11	Network port, connect to your internet router	12	Connect USB mouse or connect external USB devices
13	POWER INPUT		

2.2 Rear view for 8-ch DVR

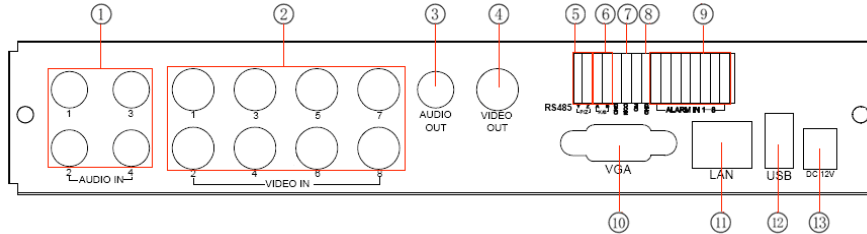


Fig 2.2 Rear view for 8-ch DVR

1	4 Ch Audio input (RCA/Phono)	2	Video input channels from 1-8 (BNC)
3	Audio output, connect to monitor or external amplifier (RCA/Phono)	4	Connect to monitor (BNC)
5	Connect to speed dome/PTZ	6	Connect to keyboard
7	1-ch relay output. Connect to external alarm	8	+5 V and Ground
9	Connect to external sensor1-8	10	VGA output, connect to monitor
11	Network port, connect to your internet router	12	Connect USB mouse or connect external USB devices
13	POWER INPUT		

2.3 Rear view for 16-ch DVR

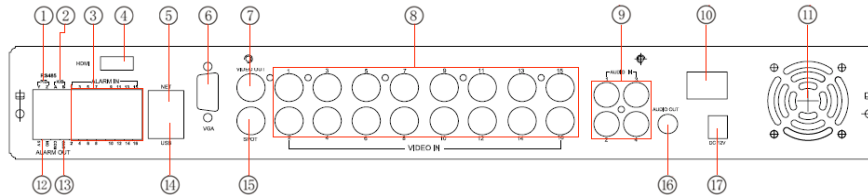


Fig 2.3 Rear Panel for 16-ch

1	P/Z : RS485 - connect to speed dome/PTZ	2	K/B : RS485 – connect to keyboard/PTZ controller
3	Connect to external sensor 1-16	4	Unused
5	Network port, connect to your internet router	6	VGA output, connect to monitor
7	Connect to monitor (BNC)	8	Video input channels from 1-16 (BNC)
9	4 Ch Audio input (RCA/Phono)	10	Power on/off switch
11	Fan for cooling the device	12	+5 V and Grounding
13	1-ch relay output. Connect to external alarm.	14	Connect USB mouse or connect external USB devices
15	Spot monitor output – will only output video, not menu.	16	Audio output, connect to monitor or external amplifier (RCA/Phono)
17	Power Input		

3. Power on

STEP1 Ensure your cameras are connected to the BNC video inputs on the back of the DVR.

STEP2 Connect a suitable monitor using the VGA or BNC video output.

STEP3 Connect the mouse and the 12 volt power supply then, if it is a 16 channel DVR, you will also need to turn the unit on with the power switch located near the power port on the rear panel of the DVR.

Our System2 DVR can only display the menu on either the VGA monitor or BNC monitor at one time. If there is a live image display but no menu display it is most likely that the other output (BNC Video out / VGA) has been selected as the master output. Press & hold the ESC key until the login dialog box appears. This switches the master output between BNC and VGA.

STEP4 The DVR will boot up and the power indicator will display blue.

STEP5 On initial start up, a Set up Wizard window will appear and guide you through the set up process including the time setup, network configuration, record configuration and disk management. Refer to the detailed setup information from the corresponding chapters. If you don't wish to use the setup Wizard simply click the Exit button to exit.

4. Basic setup

4.1 Accessing the DVR menus

4.1.1 Login

Press the MENU button to show the LOGIN dialogue box and enter the user name: (Default is "admin") and password: (Default is "123456")

If there is a live image display but no menu display Press & hold the ESC key until the login dialog box appears. This switches the master output between BNC and VGA.



Fig 4.1 Login

4.1.2 Main menu setup

Click the right mouse button then left click the lower far left icon (lines with an arrow pointing in), then click SETUP to enter the DVR's main menu.



Fig 4-2 Main menu setup

Basic: Here you can set video system (PAL, NTSC), menu language, audio and time settings.

Live: This allows you to set the name/time display, picture colour and hide cameras.

Record: Set the record quality, frame rate, resolution etc

Schedule: Your CCTV42 System2 DVR allows you to set schedules for normal, motion detected, and alarm triggered recording respectively.

Alarm: You can set sensor type, alarm trigger and buzzer alert.

Network: Controls network functions. Configure IP address, DDNS, transmission video sub-stream & email alert settings.

User: Administrators can add, delete users and change their authorization.

PTZ: The System2 DVR can control various PTZ cameras. This is where you set the protocol language, baud rate, address, presets and auto cruise track.

Reset: This clears settings including any pre-set by us prior to shipping prior to re-booting the DVR. Use this as a very last resort. Call CCTV42 first!

4.2 DVR recording modes

There are four kinds of record modes.

4.2.1 Manual Recording

Your DVR is set to record on start up. There is no need to press anything. Pressing the REC button stops recording. Press again to re-start recording.

When recording there is a blue square displayed under the camera name. When motion triggered recording occurs this icon changes colour to yellow.

4.2.2 Schedule Recording

Enter into main menu then click schedule. You can set which type of recording (normal, motion triggered, alarm triggered) takes place on specific times and on individual days of the week. We recommend normal recording 7 days 24/7.

Individual days are displayed together with the 24 hours of a day. Select or de-select individual 1 hour blocks or double click to enter specific times. A blue square represents recording, black/grey means no recording at that time.

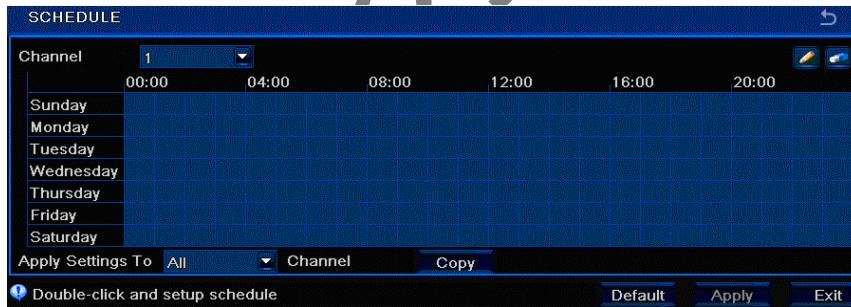


Fig 4-3 Schedule record setup

4.2.3 Motion Detected Recording

You can choose to record only when the camera sees movement. Enter the main menu, click "Alarm" then click "Motion" From this screen you can select which cameras record on motion. Check the respective box under "Enable" and select the holding time. Check the respective box under "Enable"



Fig 4-4 Motion detection interface

Click "Area" setting to select detection zone. Blue grid denotes a detection area, clear screen is ignored. Left click and drag mouse to select.



Fig 4-5 motion detection area setup

4.2.4 Alarm Recording

Enter main menu, click "Alarm", then "Sensor" From here you can configure external triggers for NO (normally open) NC (normally closed) Etc.

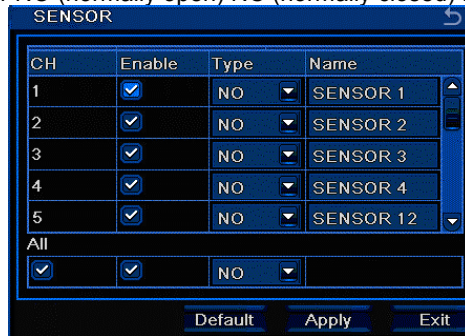


Fig 4-6 sensor alarm record

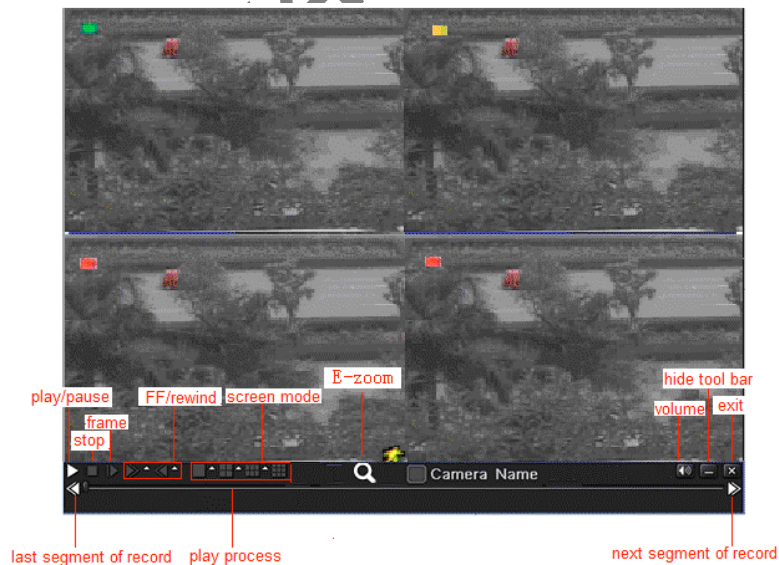
Alarm handling: This allows you to select which cameras record following an external sensor trigger, buzzer output, video display options, PTZ camera reaction and so on.

4.3 Playback

Our CCTV42 System2 DVR recorders allow you to instantly playback live recordings, search by time or search by event such as motion triggered.

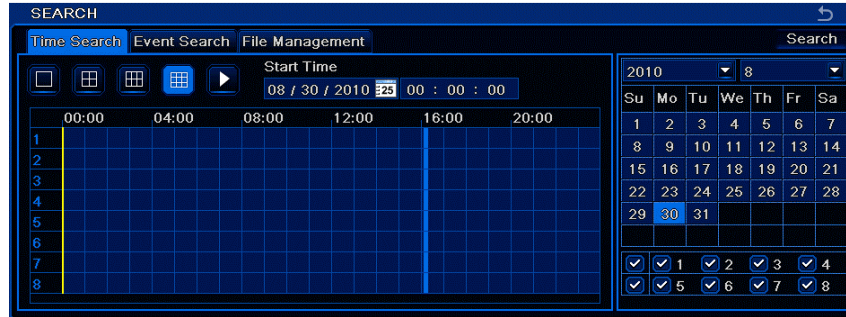
4.3.1 Live playback

Click Play  button to playback record recently recorded footage. You can go backwards or forwards using the on screen controls shown below.



4.3.2 Time search

Enter the main menu and click "Search". Select a day and click search on the top right of the screen. You can now select a start time on the grid shown.



Individual cameras can be selected by clicking the white vertical bar to the far right of the screen. The camera / date selector slides in from page right. Once the play button is clicked the fast forward, rewind, pause and stop controls appear.

4.3.3 Event search

Enter the main menu. Click "Search", then "Event Search". Select a day then click "Search". Any available events will be shown, you can scan through them using the left and right arrows on the bottom right of the screen. Simply double click the event to play it.

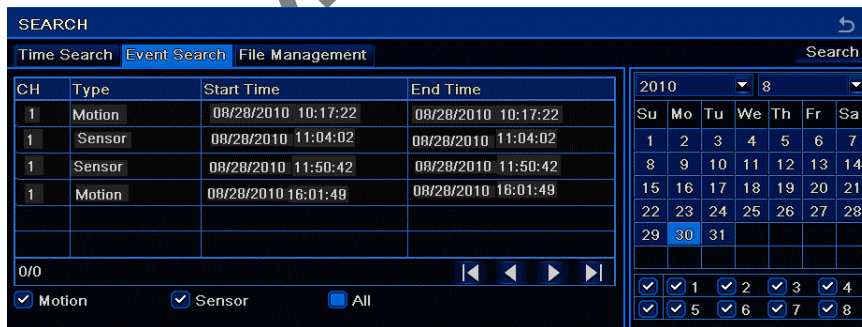


Fig 4-9 Event search

4.4 Back up

Your CCTV42 System2 DVR can back up footage using the USB port and a suitable memory device. If your DVR is connected to a network you can also back up footage straight to your computer.

From the main menu select "Backup" then select the start date and time, the finish

date and time and the cameras you wish to save. Click search and any available footage will be displayed. Make sure your memory stick is inserted in the USB port and click "Backup". Backing up in short segments works best.



5. Remote Surveillance

To remote access your DVR it must be connected to your router and configured. This can be tricky so we offer a chargeable remote set up service to help. Visit CCTV42.co.uk or call us on 01895 233311 for more details.

5.1 Using DHCP to get an IP address automatically from your router

From the main menu select "Setup", then "Network". Check the "Obtain an IP address automatically" box. Your DVR will be given an IP address by the router.

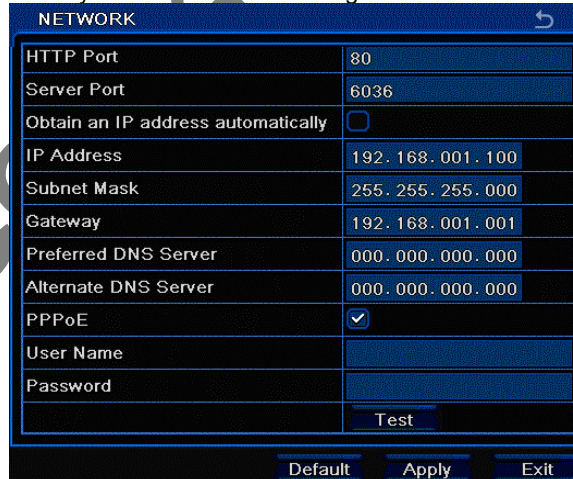


Fig 5-1 Network configuration

Resolution settings are done in the "Sub-stream" section.

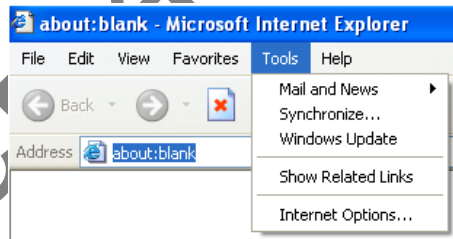
Open the Internet Explorer browser on your computer which must be connected to the same network as the DVR. Input the IP address of the DVR (which often starts 192.168.XXX.XXX) in your Internet Explorer address bar and press enter.

IE will download the ActiveX control automatically. Sometimes windows will ask your permission to proceed, click YES. If you are on Windows Vista or 7, a window opens up and asks for user name and password. In later versions of Internet Explorer, the pop-up may be replaced with a yellow bar either at the top or the bottom of the screen.

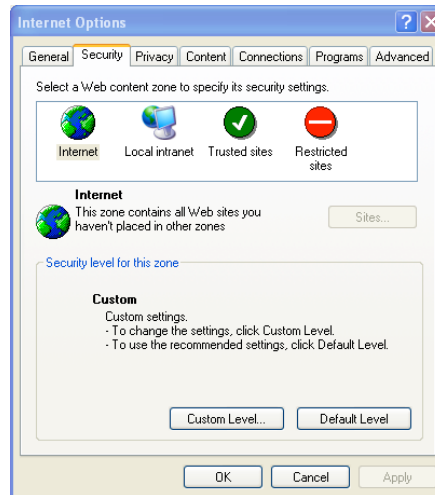
Input both the user name and password correctly. The default user name for our System2 DVR recorders is "admin" (lower case) and the default password is "123456". Once entered click enter and you should now be able to see images from your CCTV system.

If it is not possible to load Active-X try the following

Open your Internet Explorer browser. Click "Tools" then "Internet Options"

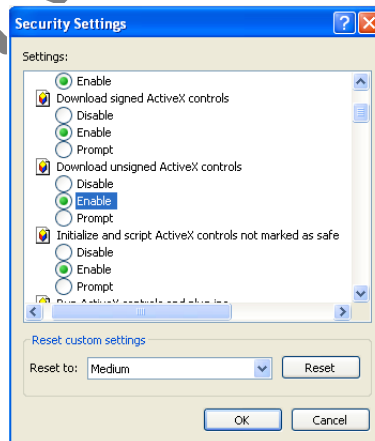


Select "Security", "Custom Level"



Click "OK"

In the sub options under "ActiveX controls and plug in", there are several options. For "Download signed ActiveX controls" and "Download unsigned ActiveX controls" select "Enable" or "Prompt". The "Prompt" option is best as it will ask your permission before downloading anything. Obviously when you try to re-load your DVR ActiveX control panel you will have to click "Allow" when prompted during the installation process.



Finally click "OK" to finish setup. You can now try to log on to your DVR IP address again and download the control panel.

Be aware that other plug-ins or anti-virus software on your computer may block the active X control panel download. Please uninstall or close them.

Accessing your System2 DVR over the Internet

This requires you to set up "Port forwarding" on your broadband router. Because each router is different we cannot give specific instructions. It may also be necessary to set up an account with a service to manage a dynamic IP address so that you always know where on the internet your CCTV system is in the event of your Internet service provider changing your Internet access IP address.

To get round this problem we offer service whereby one of our IT technicians can set everything up for you via screen sharing session. For further information visit CCTV42.co.uk or call us on 01895 233311. There is a nominal charge for this service.

5.2 Access DVR on WAN

Input IP address, Subnet, Gateway. If using DHCP, please enable DHCP in both the DVR and router.

Enter Video to set network video parameters like resolution, frame rate etc.

Forward IP address and port number in Virtual Server setup of the router or virtual server. Close firewall.

If users want to utilize dynamic domain name, need apply for a domain name in a DNS server supported by the DVR or router. Then add to the DVR or router.

Open IE browser, input IP address, or dynamic domain name and enter. If HTTP port is not 80, add the port number after IP address or domain name.

IE will download ActiveX automatically. Then a window pops up and asks for user name and password.

Input name and password correctly, and enter to view.

5.3 Connect the DVR to Internet through dial-up ADSL

Input IP address, Subnet, Gateway gotten from your ISP. If using ADSL, please input user name and password, and click OK. The DVR will connect the server and show "connection succeeds".

The following steps are the same as STEP4-7 of the connection way above.

If users want to utilize dynamic domain name, need apply for a domain name in a DDNS server supported by the DVR or router. Then add to the DVR or router.

Open IE browser, input IP address, or dynamic domain name and enter. If HTTP port is not 80, add the port number after IP address or domain name.

IE will download ActiveX automatically. Then a window pops up and asks for user name and password.

Input name and password correctly, and enter to view.